



KONICA MINOLTA

Wristwatch-Sized Pulse Oximeter

OXYGEN SATURATION MONITOR

PULSOX[®]-300

The compact and lightweight PULSOX Series, which has been well received in clinics, hospitals, and home care environments, now includes a new model with improved functionality and usability.



Large, easy-to-read LED display !!

The large LED display ensures clear readings can be seen even in the darkest places.

PULSOX[®]-300



User-friendly design with automatic power-off function !

A single AAA-size battery provides about 4,000 spot measurements. (under Konica Minolta's test conditions)

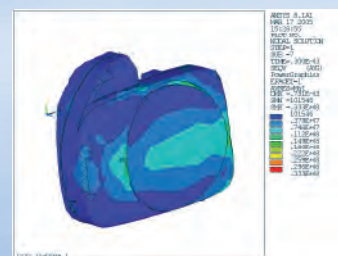


PULSOX[®]-300



Designed using 3D CAD for doubled impact resistance !

(Compared with Konica Minolta's conventional model PULSOX-3 based on structural analysis using the finite element method)



PULSOX[®]-300



Perfect fit on the wrist !

The contact surface is contoured to significantly improve stability during movement.
The main unit weighs only 56 g (including the battery).



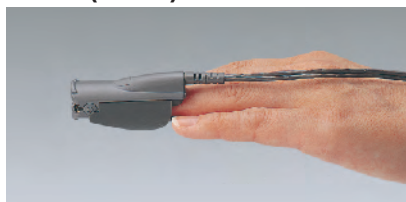
Wrist band (standard accessory)

The essentials of imaging

Select from 4 types of optional probes

The optimum probe can be selected from 4 types according to the application.

Finger Clip Probe SR-5C (0.3 m)



For continuous measurements with the main unit worn on the wrist.

Monitor Probe LM-5C (0.3 m)



For continuous measurements over a long period of time such as while sleeping.

Spot Check Probe SP-5C (0.5 m)



For face-to-face measurements in clinics or hospitals.

Extension Cable (optional) EC-300 (1 m)



For connecting the probe to the main unit to allow the length to extend.

Personal Probe SD-5C/SD-5C (20) Package of 5 (0.5 m)



For single-patient use

(Example of Spot Check Probe **SP-5C**.)



Main specifications

■ Dual-wavelength pulse type (665nm/880nm) arterial blood oxygen saturation measuring instrument

- Name: Oxygen Saturation Monitor
- Model name: PULSOX-300

■ Functions:

- Measuring range: SpO₂: 0 to 100% SpO₂
Pulse rate: 30 to 230 bpm
- Accuracy: SpO₂: ±2% SpO₂ (70 to 100% range, 1S.D.)
Pulse rate: ±2 bpm (30 to 100 range)
or ±2% of value (100 to 230 range)

■ Display

Display type: LED display

Oxygen saturation (SpO₂), Pulse rate, Pulse level meter (5 steps), Battery indication, Error messages indication

■ Warning functions

SpO₂: Low SpO₂ warning (flashing display), Battery indication (flashing when the battery is nearly empty), Error message indication

■ Operating conditions

temperature/humidity range 0 to 40°C (32 to 104°F); 30 to 85% relative humidity with no condensation

atmospheric pressure/altitude range 700 to 1060hPa (altitude: -400 to 3000m)

■ Storage conditions

temperature/humidity range -10 to 60°C (14 to 140°F); 10 to 95% relative humidity with no condensation

atmospheric pressure/altitude range 700 to 1060hPa (altitude: -400 to 3000m)

■ Power

1 AAA-size battery: 1.5V , 100mW (Service life under continual usage: approx. 16 hours with alkaline battery)

■ Dimensions (W × H × D)

68 × 58 × 15 mm

■ Weight

56 g (including battery/excluding wrist band and probes)

■ Usable life

6 years [Verified by KONICA MINOLTA SENSING, INC. (based on own data)]

Standard accessories

- Wrist Band WB-300
- 1 AAA-size alkaline battery

Specifications are subject to change without notice.

Your local representative

KONICA MINOLTA SENSING, INC.

Konica Minolta Sensing Americas, Inc.

Konica Minolta (CHINA) Investment Ltd. SE Sales Division

Konica Minolta Sensing Singapore Pte Ltd.

3-91, Daisennishimachi, Sakaiku, Sakai, Osaka 590-8551, Japan

101 Williams Drive, Ramsey, New Jersey 07446, U.S.A. Phone: 888-473-2656 (in USA), 201-236-4300 (outside USA) FAX: 201-785-2480

Rm.29A,K Cross Region Plaza, No.899 Lingling Rd., Shanghai, China Phone: +86-021-5489 0202 FAX: +86-021-5489 0005

10, Teban Gardens Crescent, Singapore 608923 Phone: +65 6563-5533 FAX: +65 6560-9721

Addresses and telephone/fax numbers are subject to change without notice. For the latest contact information, please refer to the KONICA MINOLTA SENSING Worldwide Offices web page (link below).

<http://konicaminolta.com/about/se/contact.html>

SAFETY PRECAUTIONS



For correct use and for your safety, be sure to read the instruction manual before using the instrument.

- Be sure to use the specified batteries. Using improper batteries may cause a fire or electric shock.